

Part No.  
 HDR-E26LPAH5  
 No. of Pos.    Color Marking

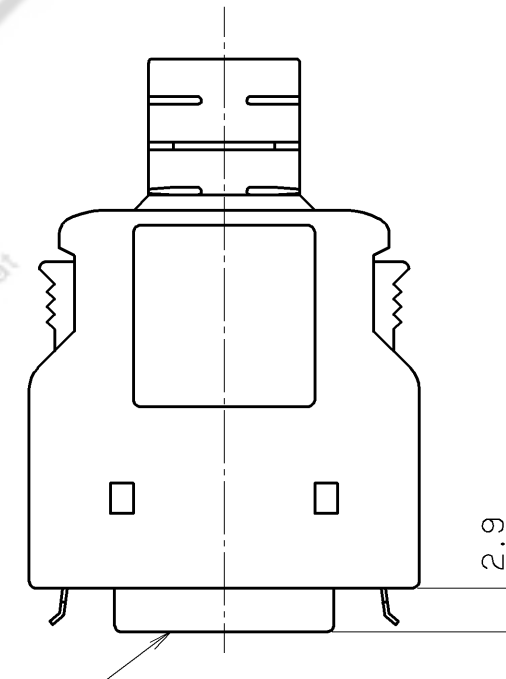
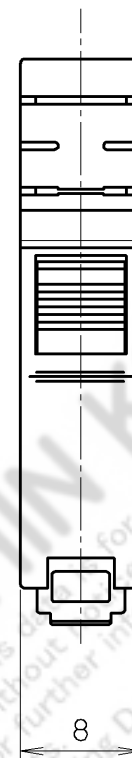
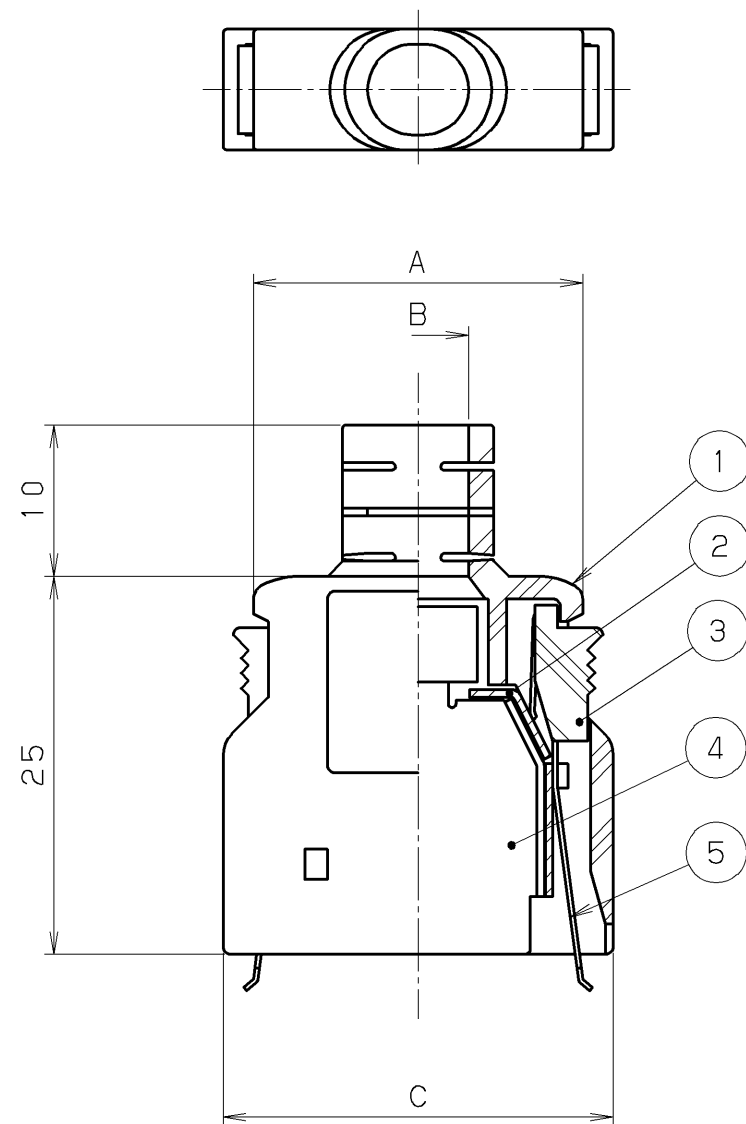
Marking  
 JAPAN  
 HONDA  
 MARKING

HDR-E ( ) LPA ( ) H	—	HONDA JAPAN
HDR-E ( ) LPA5 ( )	BLACK	—
HDR-E ( ) LPA ( )	GRAY	—
PART NO.	COLOR	MARKING

HDR-E50LPA ( ) ( )	50	31.4	7x8.7	35.4	∅7.3
HDR-E26LPA ( ) ( )	26	21.8	6x7	25.8	∅5.9
HDR-E14LPA ( ) ( )	14	17.0	∅5.6	21.0	∅5.1
PART NO.	NO. OF POS.	A	B	C	APPLICABLE CABLE O. D.
DIMENSIONS					

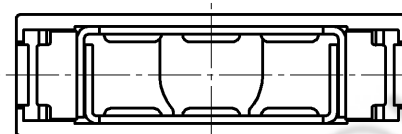
- NOTE #1. APPLICABLE CABLE OUTER DIAMETER: SEE TABLE  
 #2. APPLICABLE CONNECTOR PART NUMBER: HDR-E ( ) M ( )  
 #3. COLOR, MARKING: SEE TABLE

5	LOCK SPRING	STAINLESS STEEL	2	—	—					
4	INNER SHELL A	STEEL	1	NICKEL PLATING	—					
3	BUTTON	ABS RESIN	2	—	UL94V-0 COLOR SEE NOTE #3					
2	INNER SHELL B	STEEL	1	NICKEL PLATING	—					
1	PLASTIC COVER	ABS RESIN	1	—	UL94V-0 COLOR SEE NOTE #3					
LTR.	DATE	BY	REV.	DESCRIPT	No.	PART NAME	MATERIAL	QTY	FINISH	NOTE
DATE		SCALE		UNIT		3RD. A. P				
Mar. 10. 2005		2 / 1		mm (INCH)		HONDA TSUSHIN KOGYO CO., LTD.				
APP. DATE & REV.						NAME				
DR. DE. CHK. CHK. APP.						HDR-E TYPE SHIELDED COVER				
Y. KATO Y. KATO — C. NUNOKAWA H. EBIHARA						PART NO. HDR-E ( ) LPA ( ) ( )				
						REV. A				



HDR-E ( ) MAG1

NOTE 1. APPLICABLE CABLE  
 WIRE SIZE: AWG#30 (7/0.1), Ø0.58 (CORE JACKET O. D)  
 SHIELDED: SINGLE BRAIDS  
 OUTER DIAMETER OF JACKET (PVC)



HDR-E26LPA-LS	26	21.8	6x7	25.8
HDR-E14LPA-LS	14	17.0	Ø5.6	21.0
PART NO.	NO. OF POS.	A	B	C
DIMENSIONS				

LTR.	DATE	BY	REV.	DESCRIPT	No.	PART NAME	MATERIAL	QTY	FINISH	NOTE
					5	LOCK SPRING	STAINLESS STEEL	2		
					4	INNER SHELL A	STEEL	1	NICKEL PLATING	
					3	BUTTON	ABS RESIN	2		UL94V-0 GRAY
					2	INNER SHELL B	STEEL	1	NICKEL PLATING	
					1	PLASTIC COVER	ABS RESIN	1		UL94V-0 GRAY
DATE						SCALE	UNIT	3RD. A. P		
MAR.19.1999						2 / 1	mm (INCH)	HONDA TSUSHIN KOGYO CO., LTD.		
APP. DATE&REV.						NAME		HDR-E TYPE SHIELDED COVER		
DR. DE. CHK. CHK. APP.						PART NO.		HDR-E ( ) LPA-LS		
Y. KATO Y. KATO K. HOMMA K. SATO Y. HIRAI								REV.		