

Stacking straight SMT type low-profile male connector for PCBs

LPZ-()SMY+

For PCBs or FPCs

Straight SMT

RoHS

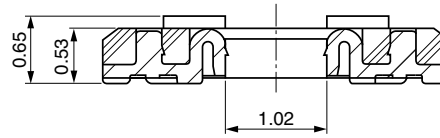
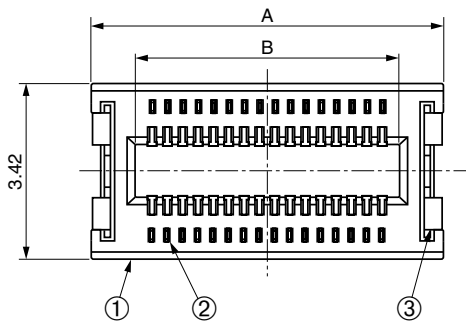


● Configuration of product Part No.

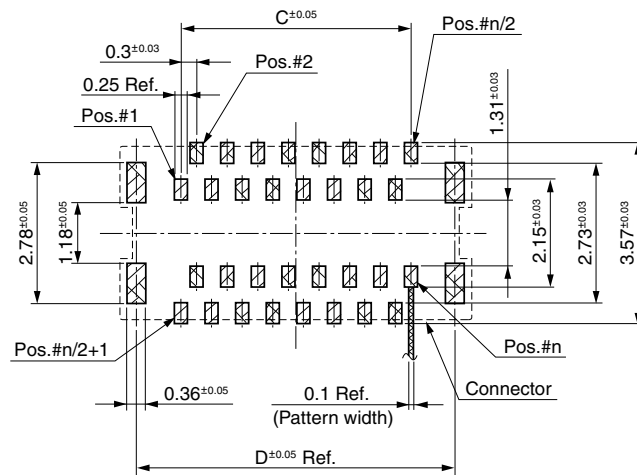
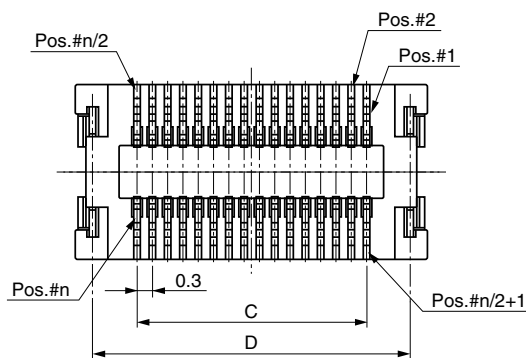
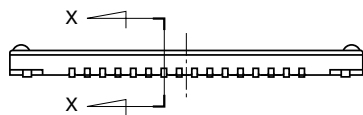
LPZ- () SMY+

① ② ③

- ① Series name
- ② No. of contacts: 32, 40, 48 or 60
- ③ Straight, SMT type, male



X-X' cross section



Recommended PCB layout

● Components

①	Insulator
②	Contacts
③	Hold down

● Dimensions

Part No.	A	B	C	D
LPZ-32SMY+	6.91	5.16	4.5	6.25
LPZ-40SMY+	8.11	6.36	5.7	7.45
LPZ-48SMY+	9.31	7.56	6.9	8.65
LPZ-60SMY+	11.11	9.36	8.7	10.45

Mating connectors: LPZ-E()SFY+

Stacking straight SMT type low-profile female connector with shield for PCBs
LPZ-E()SFY+

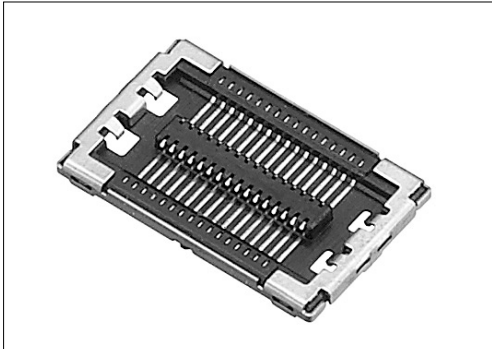
0.3 mm pitch, 0.7 mm height

For PCBs and FPCs

Straight SMT

RoHS

EMI/ESD-filtered countermeasures

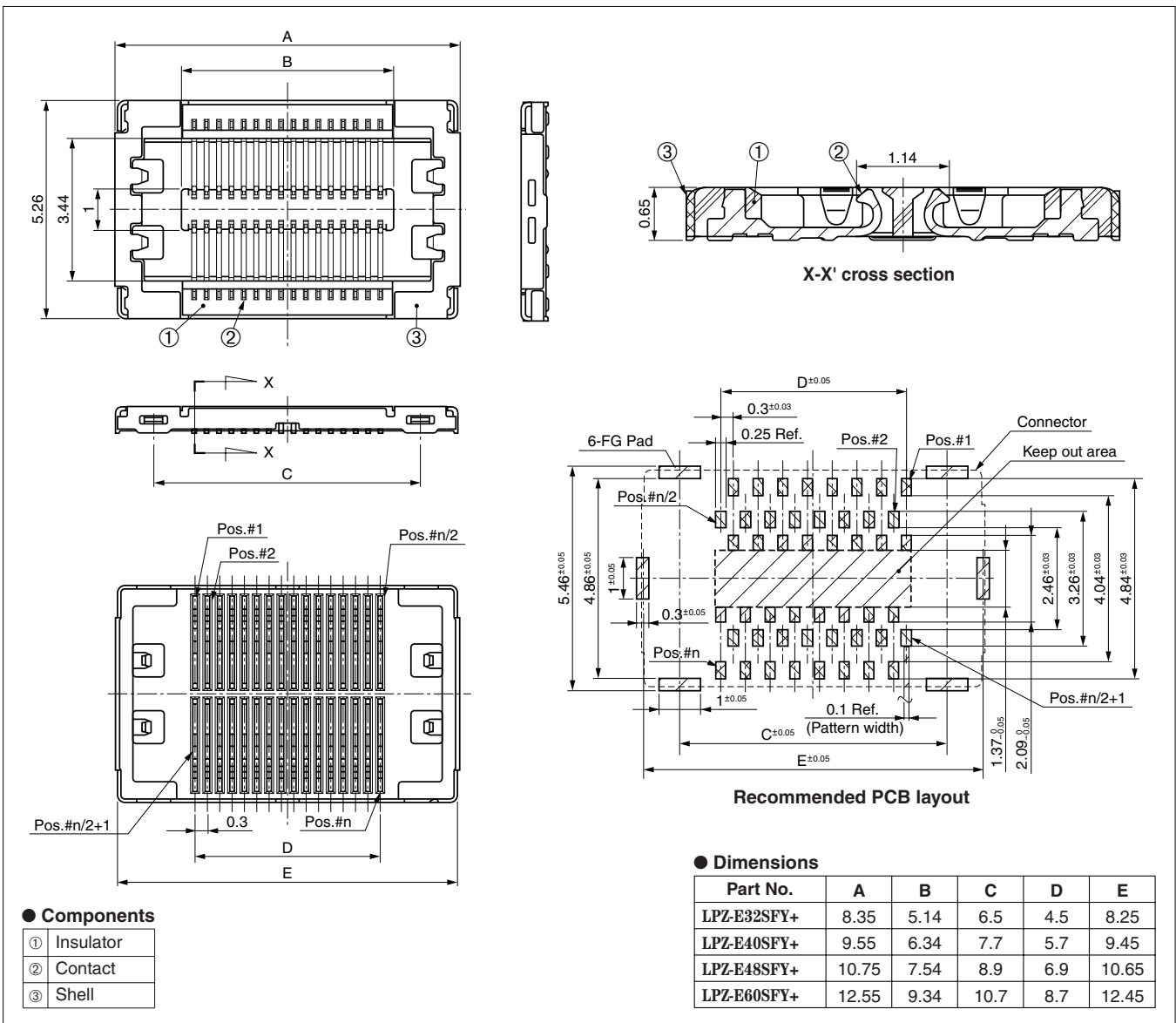


● Configuration of product Part No.

LPZ- E () SFY+

① ② ③ ④

- ① Series name
- ② Shield
- ③ No. of contacts: 32, 40, 48 or 60
- ④ Straight, SMT type, female



Mating connectors: LPZ-()SMY+