

IDC type (power contact: crimping type) male connector for cable and panel PCL-A() ()M+

RoHS

Complex connector
For cable and panel
IDC (1.27 mm), Crimping
Sequence



● Configuration of product Part No.

PCL-A () () M+

① ② ③ ④

- ① Series name
- ② No. of contacts: 58 or 68 (includes 8 power contacts)
- ③ Strain relief
Blank: Not provided
R : Provided
- ④ Type of contact
M: Signal contacts 1.27 mm pitch, IDC type, male
(AWG#28 stranded flat cable)

Note 1: Power sections have housing structures for crimping contacts.

● Components

①	Insulator
②	Power contact
③	Signal contact

● Dimensions

Part No.	A	B	C	D	E	F	N
PCL-A58()M+	99.0	92.0	70.0	2.54×24=60.96	1.27×49=62.23	82.0	50
PCL-A68()M+	111.7	104.7	82.7	2.54×29=73.66	1.27×59=74.93	94.7	60

Mating connectors: PCL-A() ()F+ Mounting screws for floating connector: PCL-A-SC()

Power contacts: PCL-A-M() ()

IDC tool: Cable cutter: MFC-K3, Hand press: MFC-K1 or RPS-K4, Locator plate: PCL-K1 (Refer to page Tool-16)

Hand crimping tool: KP-PCL-346M()N Extraction tool: PCL-AM1 (Refer to page Tool-8, 9)

Through hole	SMT	Press-in	IDC	Soldering	Crimping	Wire wrapping	Others

IDC type (power contact: crimping type) female connector for cable and panel PCL-A() () F+

RoHS

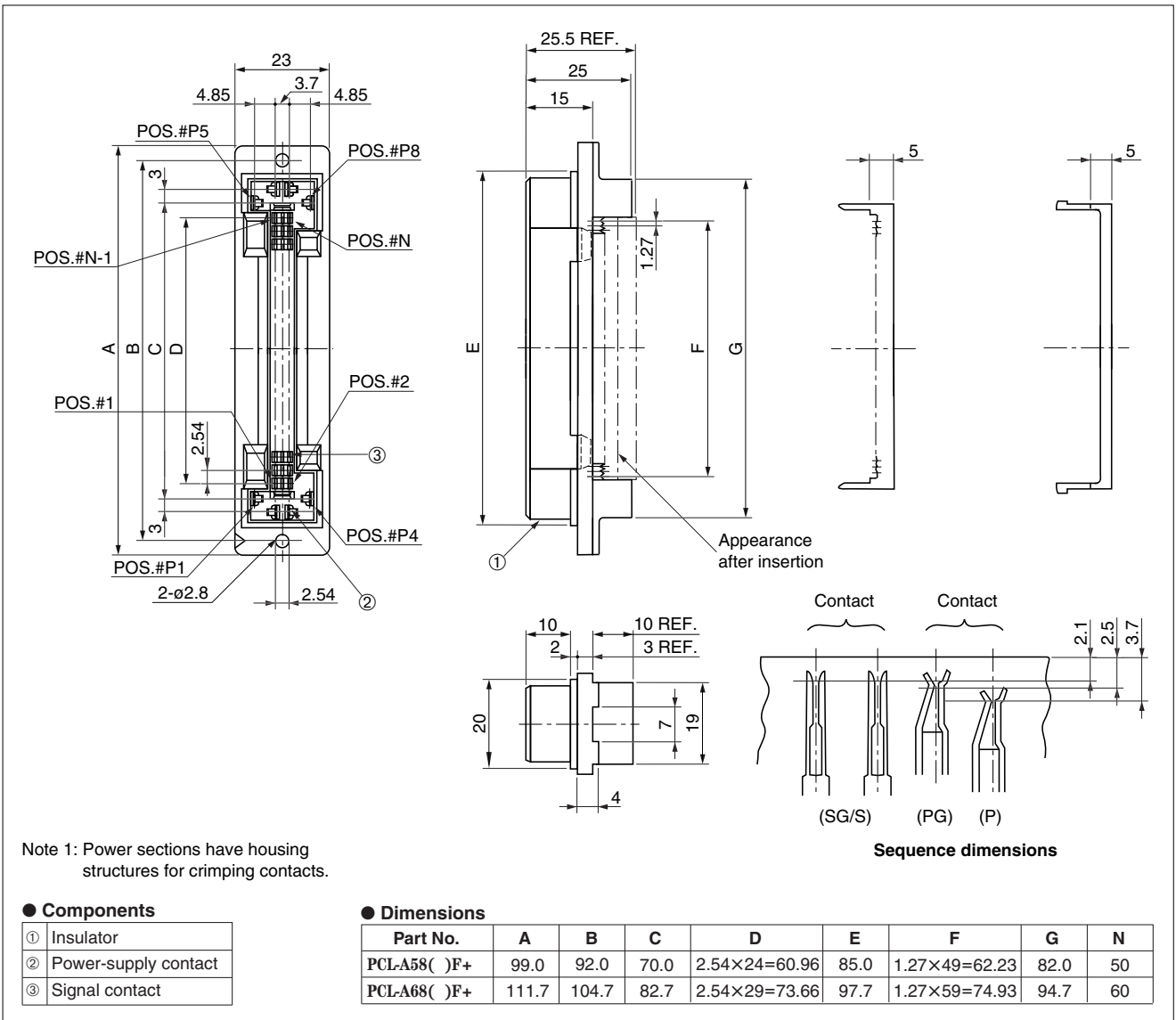
Complex connector
For cable and panel
IDC (1.27 mm), Crimping
Sequence



● Configuration of product Part No.

PCL-A () () F+

- ① Series name
 ② No. of contacts: 58 or 68 (includes 8 power contacts)
 ③ Strain relief
 Blank: Not provided
 R : Provided
 ④ Type of contact
 F : Signal contacts, 1.27 mm pitch, IDC type, female
 (AWG#28 stranded flat cable)



Mating connectors: PCL-A() () M+

Power contacts: PCL-A-F()

IDC tool: Cable cutter: MFC-K3, Hand press: MFC-K1 or RPS-K4, Locator plate: PCL-K1 (Refer to page Tool-16)

Hand crimping tool: KP-PCL-346F() N Extraction tool: AMQ-RT2 (Refer to page Tool-9)

Cable crimping type male contact for PCL-A type
(for power)

For cable

PCL-A-M() ()

Crimping

RoHS

Contact

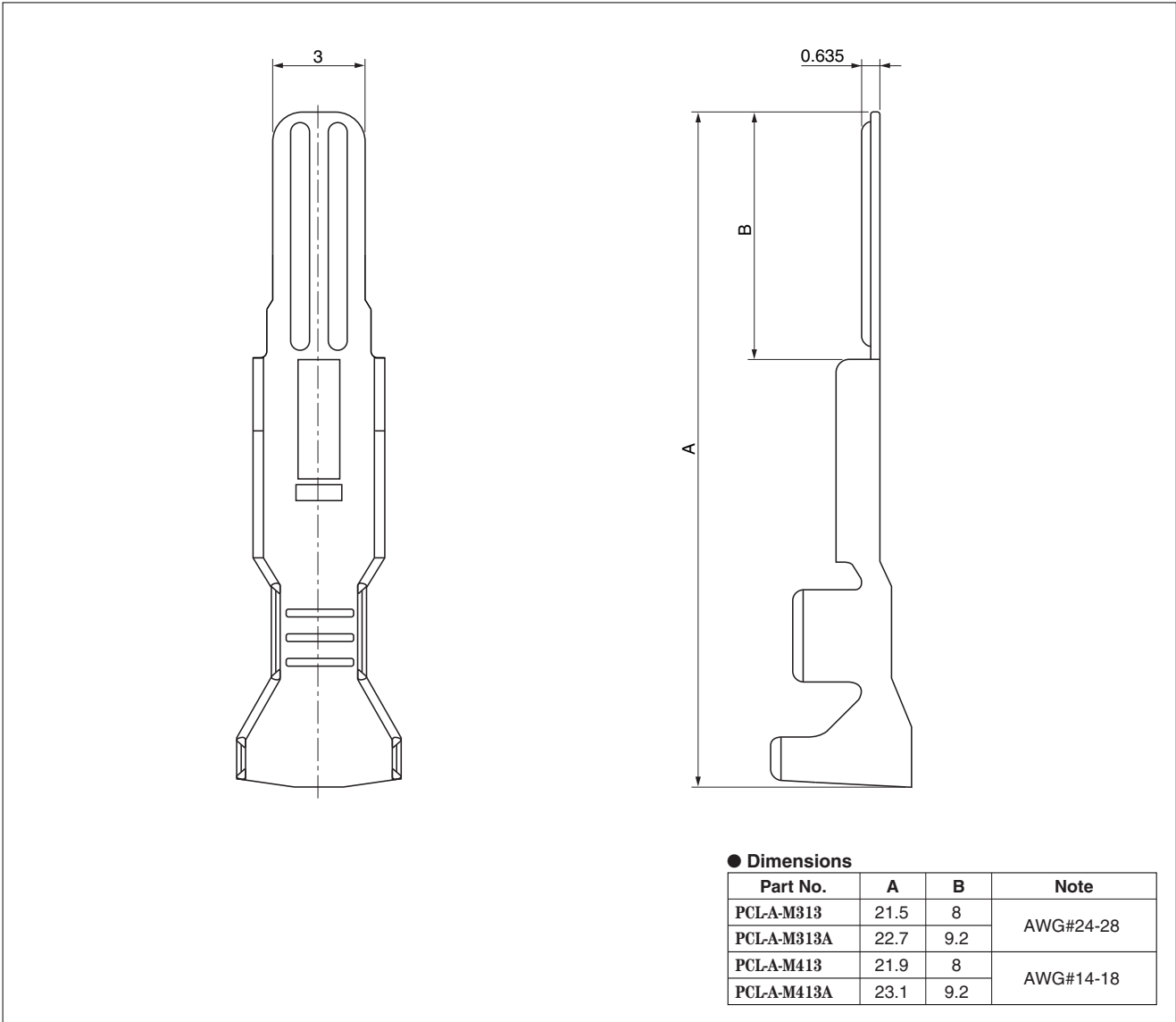


● Configuration of product Part No.

PCL-A- M() ()

① ② ③

- ① Series name
- ② Type of contact
M313: Bulk male contact for AWG#24-28
M413: Bulk male contact for AWG#14-18
- ③ Dimensions (See Table)
Blank: Short contact (for use with PCL-A or PCL-G type connector)
A : Long contact (for use with PCL-A or PCL-G type connector)



● Dimensions

Part No.	A	B	Note
PCL-A-M313	21.5	8	AWG#24-28
PCL-A-M313A	22.7	9.2	
PCL-A-M413	21.9	8	AWG#14-18
PCL-A-M413A	23.1	9.2	

Hand crimping tool: AWG#14: KP-PCL-346MCN AWG#16: KP-PCL-346MBN AWG#18: KP-PCL-346MAN

AWG#24-26: KP-PCL-346MEN AWG#26-28: KP-PCL-346MDN (Refer to page Tool-8, 9)

Accessory for PCL-A type
PCL-A-SC()

Complex connector

Accessory

Mounting screw

For floating connector

RoHS

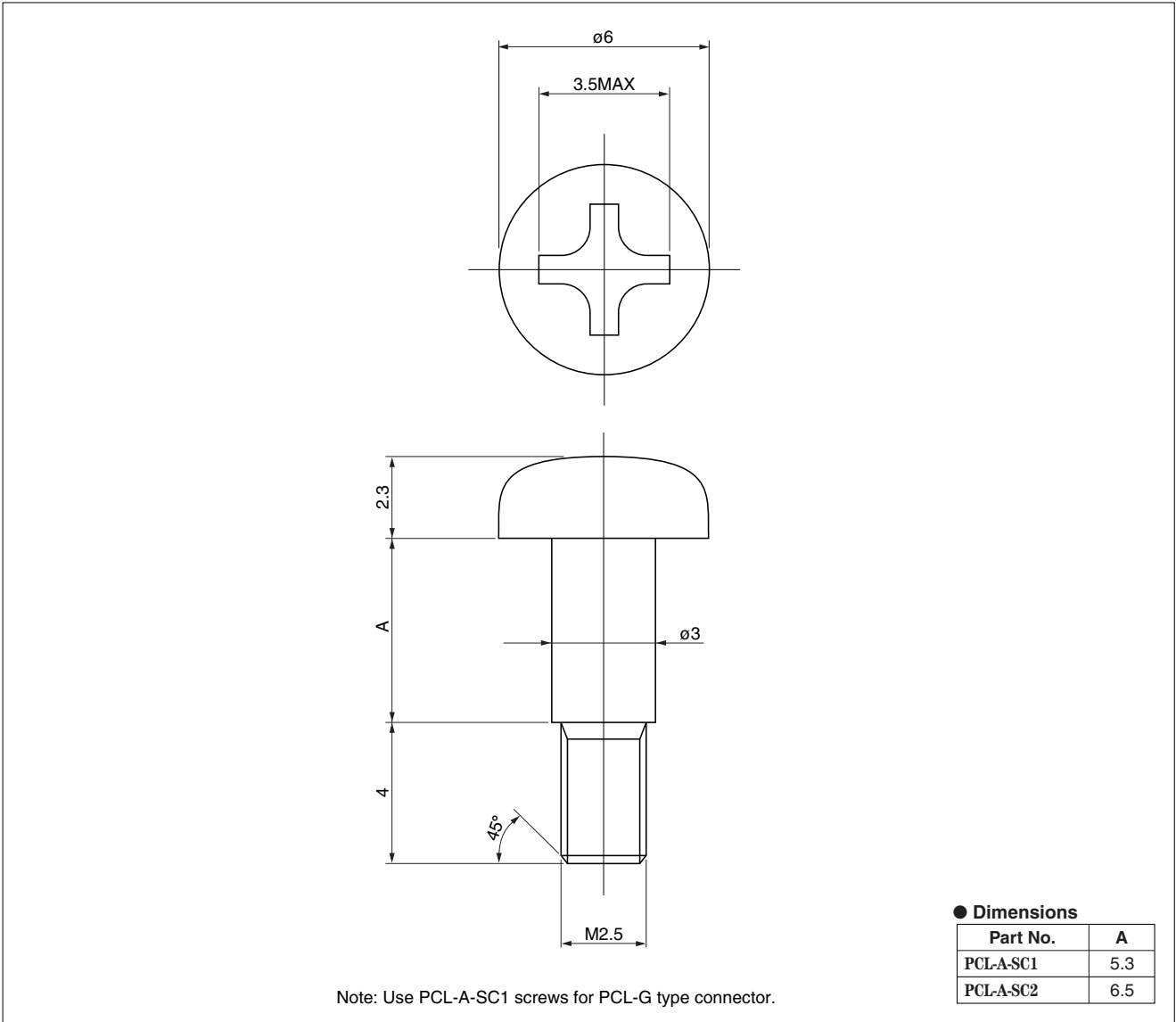


● Configuration of product Part No.

PCL-A- SC ()

① ② ③

- ① Series name
- ② SC: Mounting screw for floating connector
- ③ Dimensions
 - 1: } See Table
 - 2: }



● Dimensions

Part No.	A
PCL-A-SC1	5.3
PCL-A-SC2	6.5

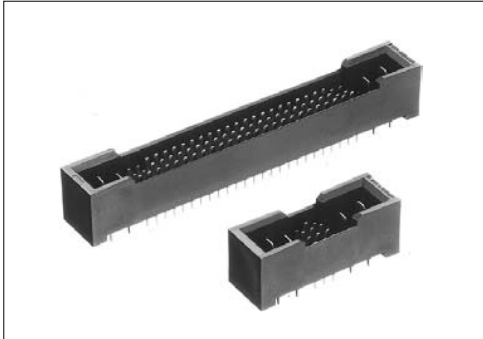
Note: Use PCL-A-SC1 screws for PCL-G type connector.



Straight through hole type male connector for PCB PCL-B()MD+

RoHS

Complex connector
For PCB
Straight Through hole
Sequence

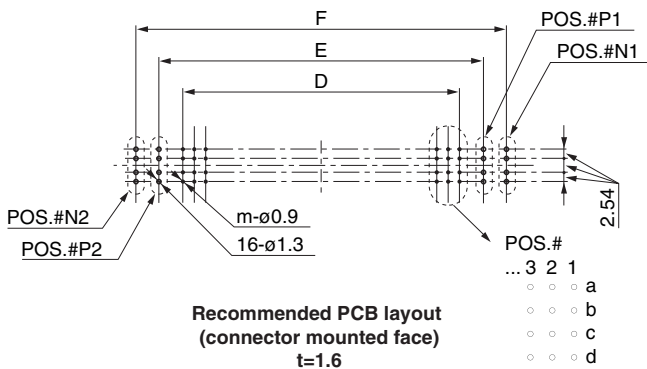
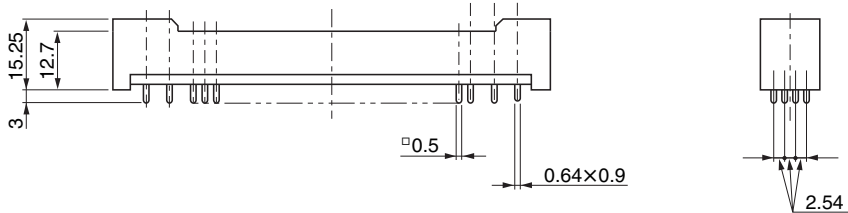
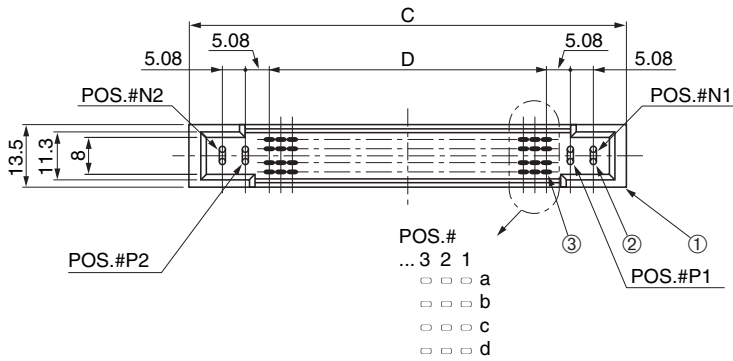


● Configuration of product Part No.

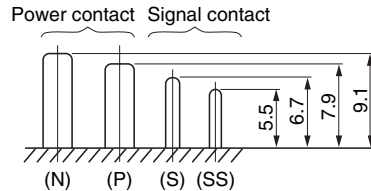
PCL-B () MD+

① ② ③

- ① Series name
- ② No. of contacts: 16 or 104 (includes 4 power contacts)
- ③ Type of contact
MD: Straight through hole type, male



SS: 1c,3c (For 16-contact connector)
1c,1d,2c,2d,24c, 24d,25c ,25d
(For 104-contact connector)



Sequence dimensions

● Components

①	Insulator
②	Power contact
③	Signal contact

● Dimensions

Part No.	C	D	E	F	m
PCL-B16MD+	39.12	2.54×2=5.08	15.24	25.4	12
PCL-B104MD+	95	2.54×24=60.96	71.12	81.28	100

Mating connectors: PCL-B()FD()+

Straight through hole type female connector for PCB
PCL-B()FD()+

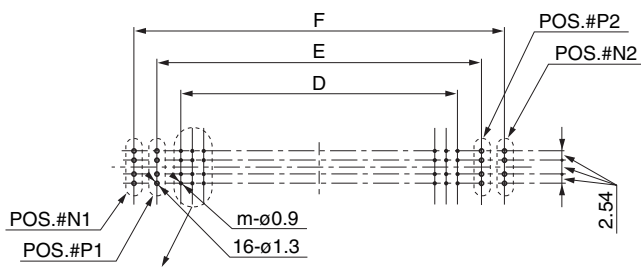
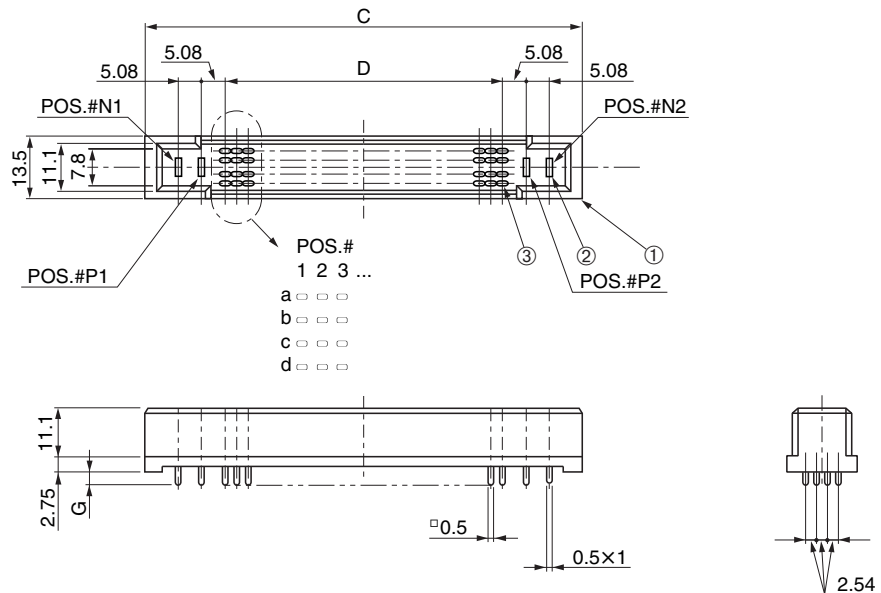


● Configuration of product Part No.

PCL-B () FD ()+

① ② ③ ④

- ① Series name
- ② No. of contacts: 16 or 104 (includes 4 power contacts)
- ③ Type of contact
FD: Straight through hole type, female
- ④ Through hole length
Blank : 3 mm
5 : 4.7 mm



Recommended PCB layout
(connector mounted face)
t=1.6

POS.#
1 2 3 ...
a ○ ○ ○
b ○ ○ ○
c ○ ○ ○
d ○ ○ ○

● Components

①	Insulator
②	Power contact
③	Signal contact

● Dimensions

Part No.	C	D	E	E	G	m
PCL-B16FD+	32.32	2.54×2=5.08	15.24	25.4	3	12
PCL-B104FD+	88.2	2.54×24=60.96	71.12	81.28		100
PCL-B16FD5+	32.32	2.54×2=5.08	15.24	25.4	4.7	12

Mating connectors: PCL-B()MD+

IDC type (power contact: crimping type) male connector for cable and panel

PCL-G96RM()+

RoHS

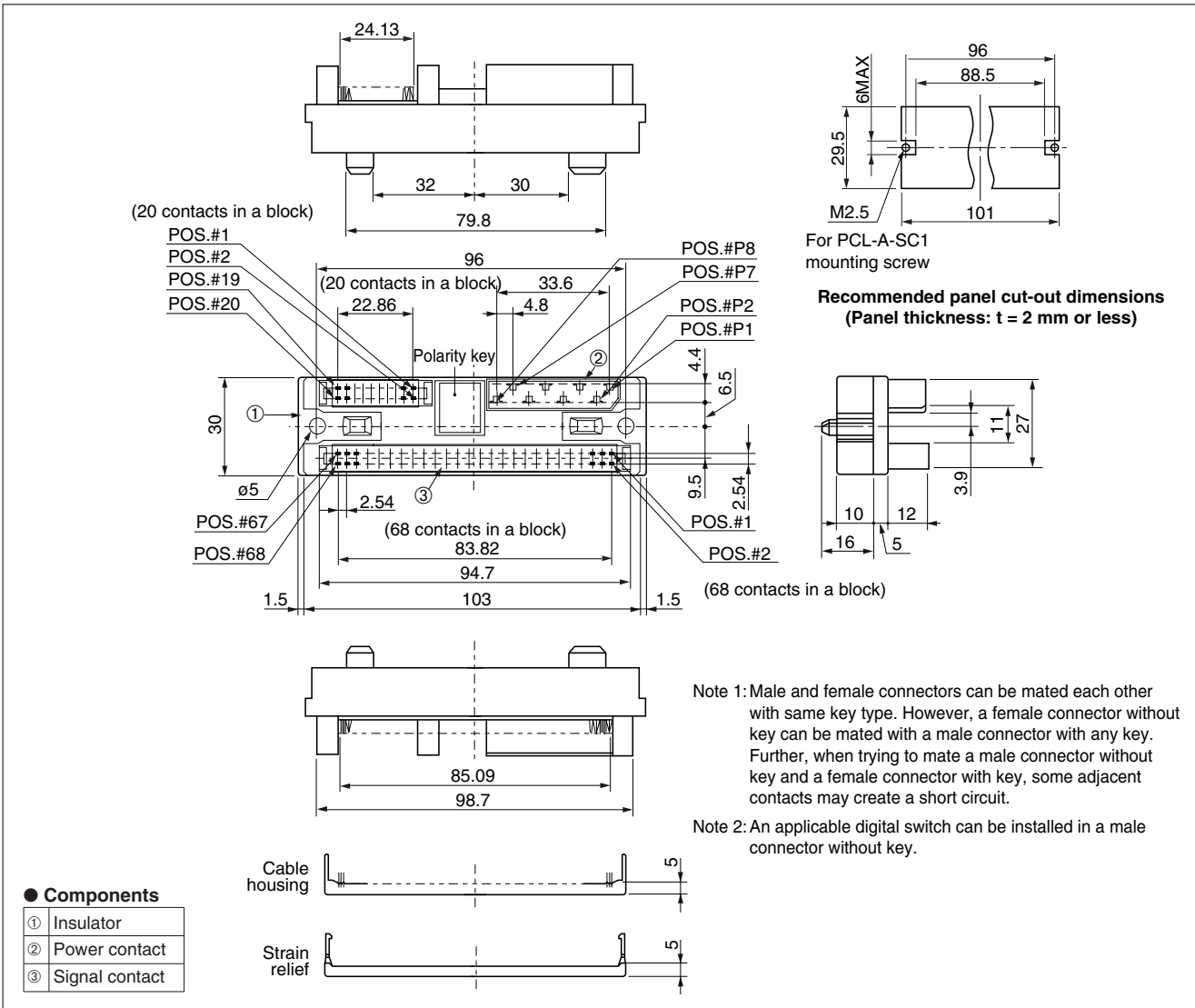
Complex connector
For cable and panel
IDC (1.27 mm), Crimping
Sequence



● Configuration of product Part No.

PCL-G 96 RM ()+

- ① Series name
 ② No. of contacts: 96 (20 in a block for signal, 68 in a block for signal and 8 in a block for power-supply)
 ③ Type of contact
 RM: 1.27 mm pitch signal contacts, IDC type, with strain relief, male (AWG#28 stranded flat cable)
 ④ Type of key (See Note #1)
 Blank: None (See Note #2)
 1 : Key type 1
 2 : Key type 2



Mating connectors: PCL-G96RF()+()+ (See Note #1)

Mounting screw (for floating connector): PCL-A-SC1

Power contacts: PCL-A-M()

For use with digital switch (See Note #2): T55-03M1 (made by Cherry Co.)

IDC tool: Hand press: Locator plate: MLPT-0001A, HandPress: RPS-K4 (Refer to page Tool-16)

Hand crimping tool: KP-PCL-346M()N

Extraction tool: PCL-AM1 (Refer to page Tool-8, 9)

IDC type (power contact: crimping type) female connector for cable and panel

PCL-G96RF() ()+

RoHS

Complex connector

For cable and panel

IDC (1.27 mm), Crimping

Sequence

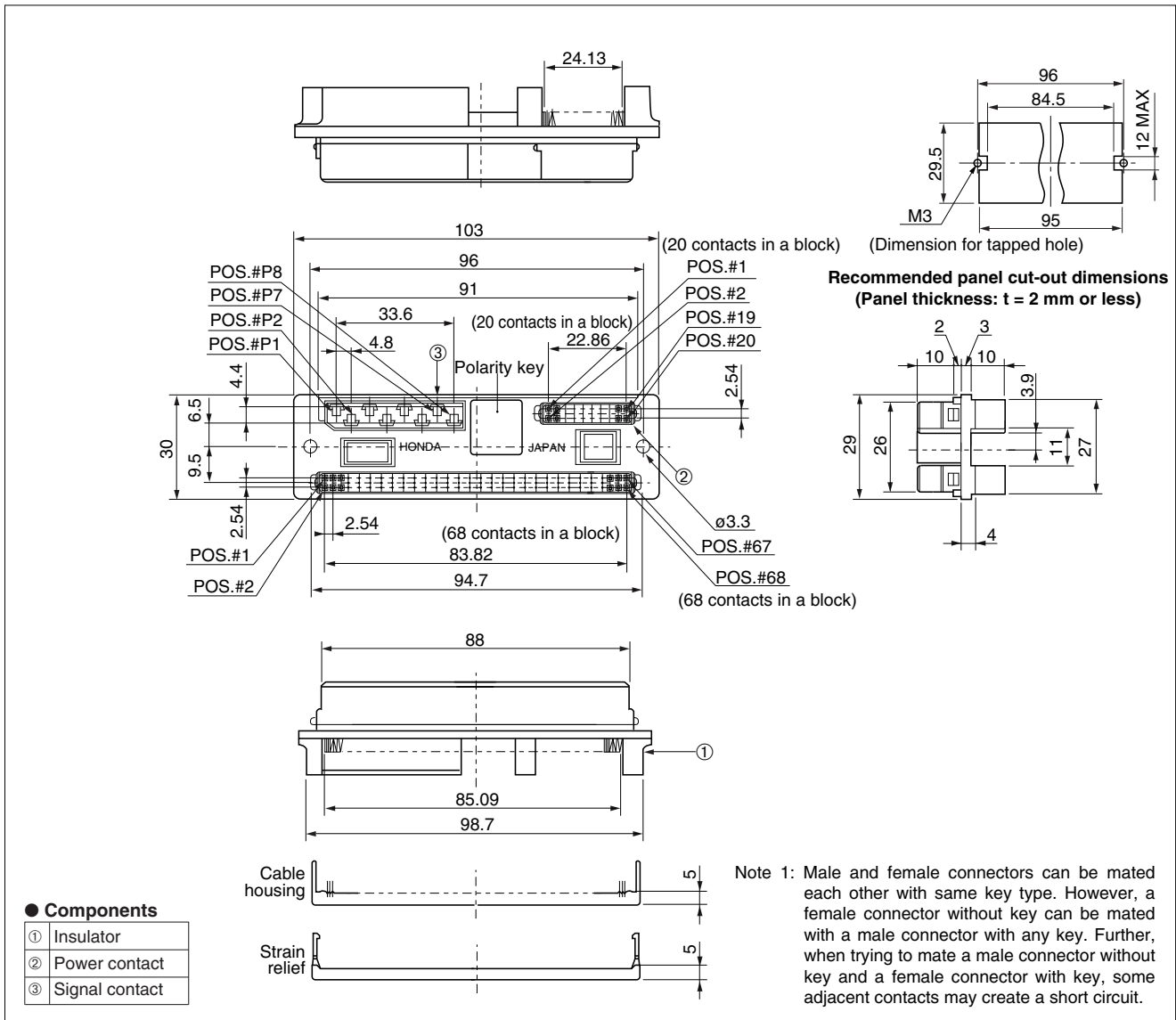


● Configuration of product Part No.

PCL-G 96 RF () ()+

① ② ③ ④ ⑤

- ① Series name
- ② No. of contacts: 96 (20 in a block for signals, 68 in a block for signals and 8 in a block for power)
- ③ Type of contact
RM: 1.27 mm pitch signal contacts, IDC type, with strain relief, female (AWG#28 stranded flat cable)
- ④ Type of key (See Note #1)
Blank: None
1 : Key type 1
2 : Key type 2
- ⑤ Others
Blank: Standard type
A : Mounting hole diameter: 2.8mm
B : 68 contacts in a block for signals, AWG#30 stranded flat cable for IDC



● Components

①	Insulator
②	Power contact
③	Signal contact

Mating connectors: PCL-G96RM()+ (See Note #1)

Power contacts: PCL-A-F()

IDC tool: Locator plate: MLPT-0001A, Hand press: RPS-K4 (Refer to page Tool-16)

Hand crimping tool: KP-PCL-346F (JN) Extraction tool: AMQ-RT2 (Refer to page Tool-9)

Through hole	SMT	Press-in	IDC	Soldering	Crimping	Wire wrapping	Others

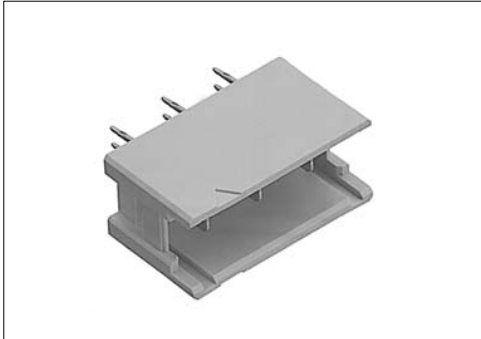
PCB side press-in type male connector for power
PCL-3SMPG1

Complex connector

For PCB

Press-in

RoHS

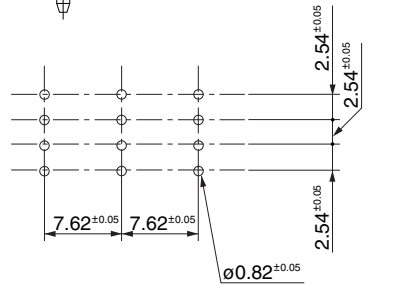
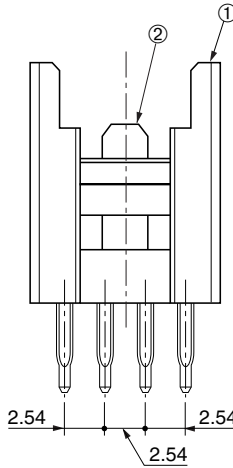
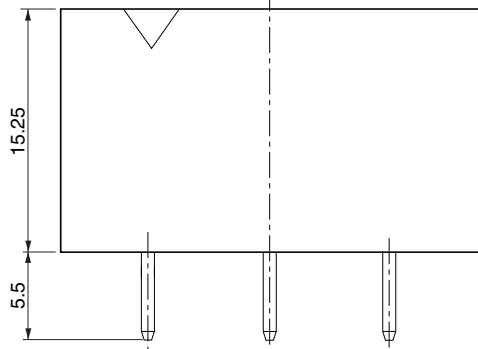
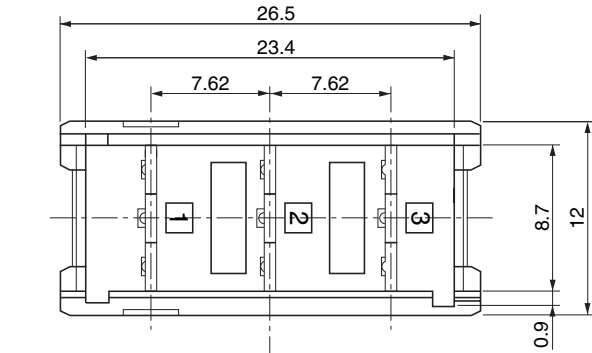


● Configuration of product Part No.

PCL- 3 SMPG1

① ② ③

- ① Series name
- ② No. of contacts: 3
- ③ Type name: Press-in type



● Components

①	Insulator
②	Male contact

Recommended PCB layout

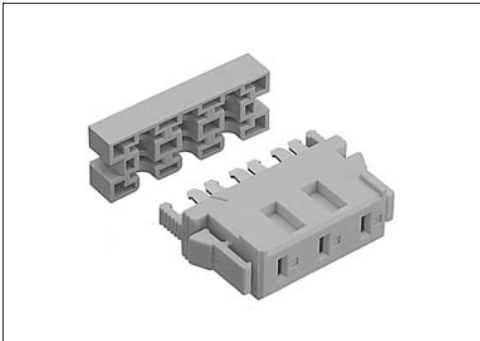
Mating connectors: PCL-3SFUG()1+

Cable side IDC type female connector for power
PCL-3SFUG()1+

For cable

IDC

RoHS

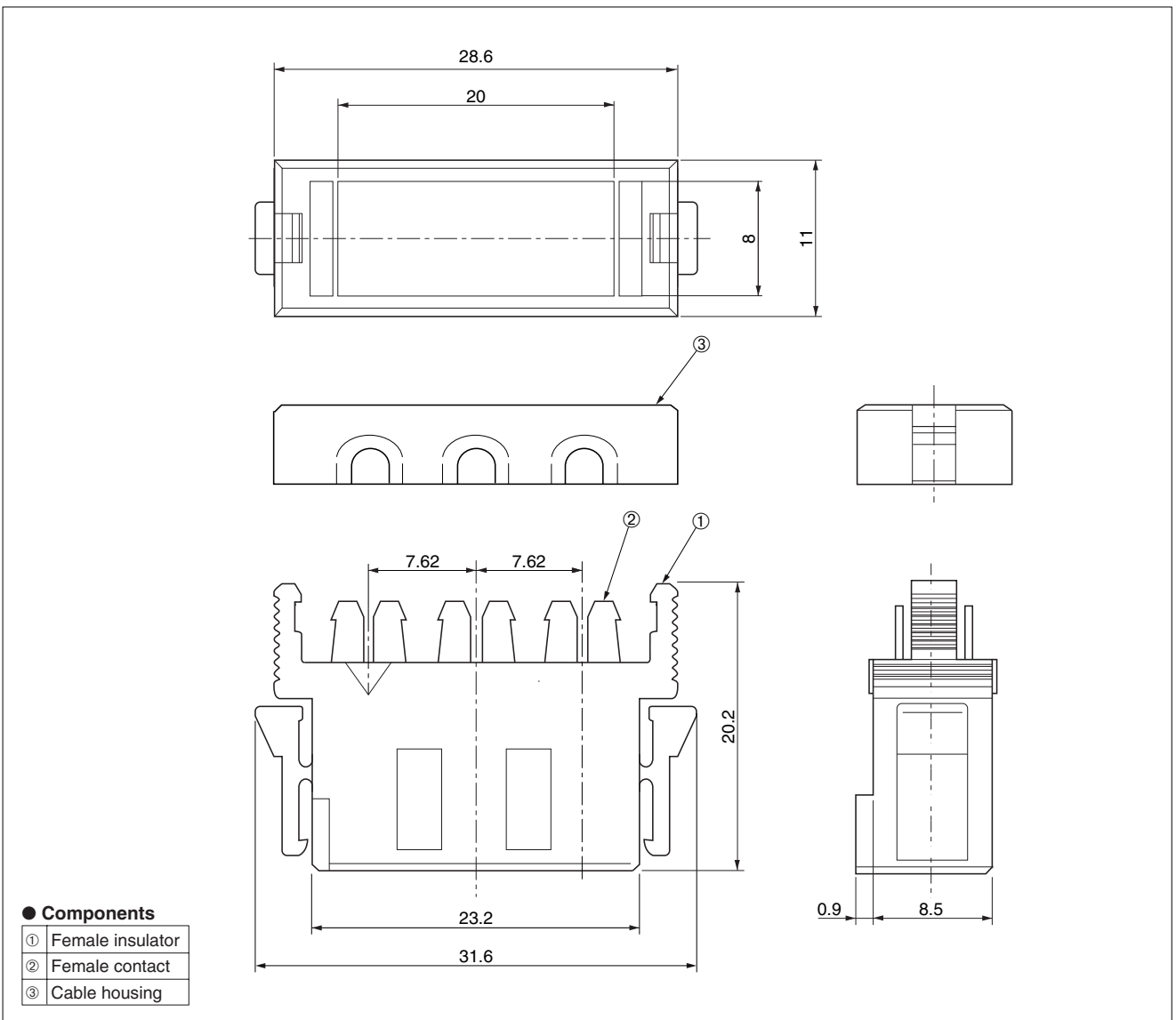


● Configuration of product Part No.

PCL- 3 SFUG()1+

① ② ③

- ① Series name
- ② No. of contacts: 3
- ③ Type of contacts: IDC type, female
SFUG1 : use UL 1015 AWG#18 stranded flat cable
SFUGA1: use UL 1015 AWG#14 stranded flat cable



Mating connectors: PCL-3SMPG1

IDC tool: Locator plate: FLPT-0010A, Hand press: RPS-K4 (Refer to page Tool-16)