



# PXF series

## Connectors for Mobile Equipment

### Outline

The PXF series of complex connectors are conforming to EIAJ RC-5238 standard IMT-2000 mobilephone connector A.

### Features

- Contact pitch is 0.5 mm. However, this series utilizes highly reliable bellows type contacts.
- Since the housing of this connector does not use screws, part reduction and weight reduction have been achieved.
- Since housing is small and low-profile, size reduction of equipment can be achieved.

### Principal Applications

The next generation terminals, browser boards, PDA mobile terminals, etc.

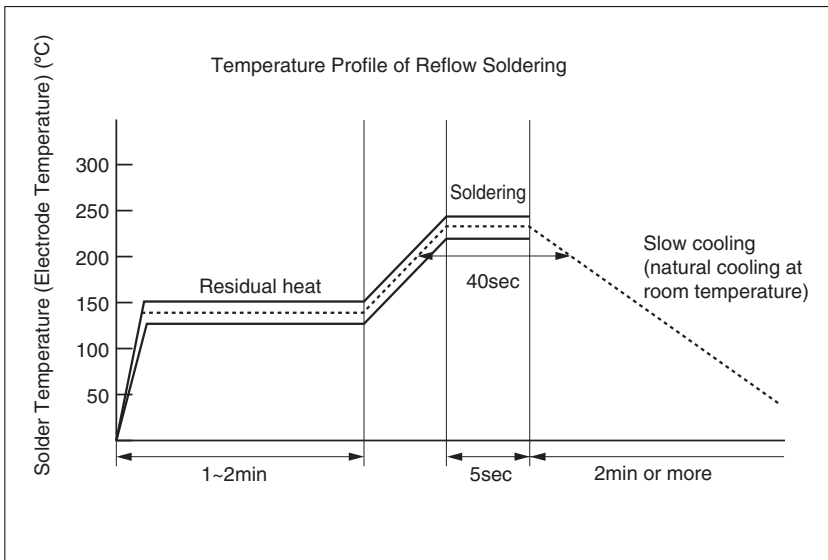
### Electrical Characteristics

Rated voltage	30V AC (r.m.s.) or V DC
Rated current	Contact numbers 1, 4, 5, 6 and 10: 1.0 A Other contacts: 0.5 A
Insulation resistance	Signal contacts for cable wires: Over 1000 megohms at 250V DC Signal contacts for coaxial cable wire: Over 1000 megohms at 100V DC
Dielectric withstanding voltage	Signal contacts for cable wire: 300V AC (r.m.s.) for one minute Signal contacts for coaxial cable wire: 100V AC (r.m.s.) for one minute
Contact resistance	50 milliohms or less

#### Document Disclaimer

- When placing orders with us, minimum order quantities are set for every product.
- Be sure to contact us before starting preliminary design of PCBs using our connectors.
- The specifications and information shown in the catalog are subject to change without notice.

## Reflow temperature profile (for reference purposes)



The reflow temperature profile shown in this drawing is for reference purposes. This profile depends on requirements such as reflow equipment, soldering paste, and PCB size. Thus, this profile may not meet with your specific situation. Please evaluate your PCB-mounting soldering and set your own reflow temperature profile.

### ●Applicable products

PXF-A10LMYP+

The profile shown in this drawing is applicable only for those products shown above.

---

## Product List



Receptacle female connector for  
cellular phone  
PXFA10LMYP+

**G-6**  
PXF series...4



Plug connector for cellular phone  
(Connector components)  
PXFA10FSP+

**G-7**  
PXF series...5



Plug connector for cellular phone  
(Case components)  
PXFA10SP

**G-8**  
PXF series...6

# Receptacle connector for cellular phone PXF-A10LMYP+

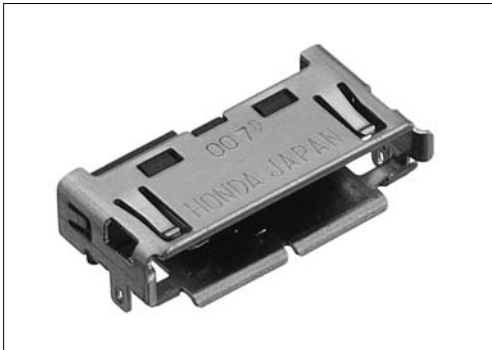
For mobile equipment

Receptacle

Right-angle SMT

RoHS

EIAJ RC-5238 IMT-2000 type A

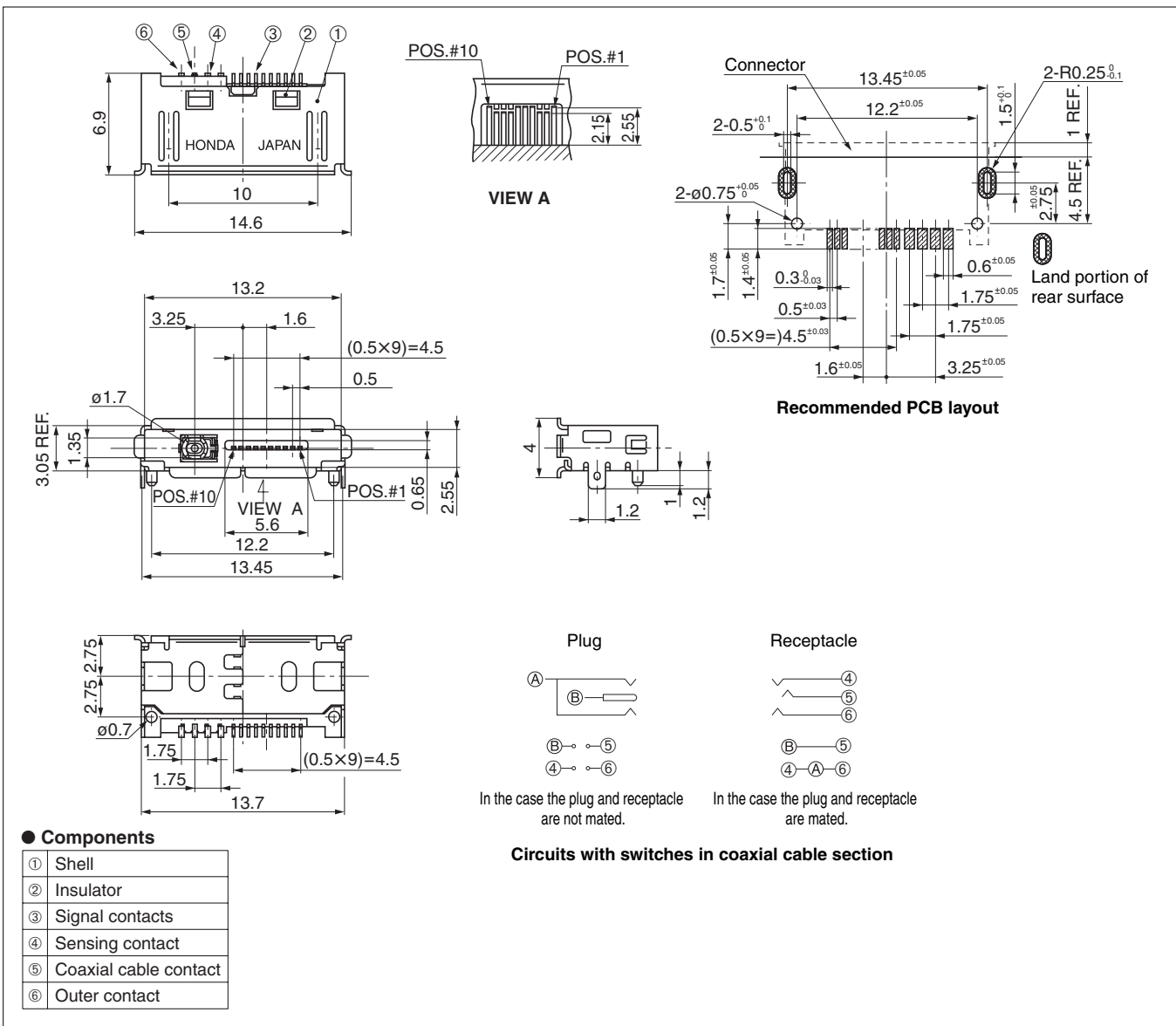


● Configuration of product Part No.

## PXF-A 10 LMYP+

①      ②      ③

- ① Series name
- ② No. of contacts: 10
- ③ Type of contact: Right-angle SMT type, male



Mating connectors: PXF-A10FSP+

Plug connector for cellular phone  
(Connector components)  
PXF-A10FSP+

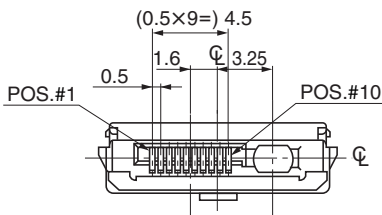
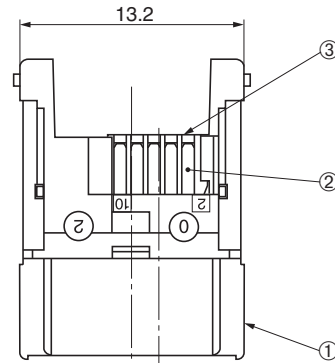
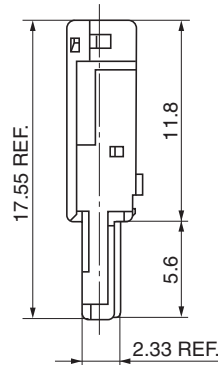
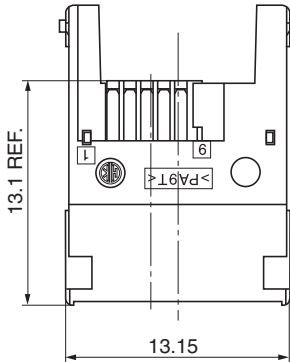
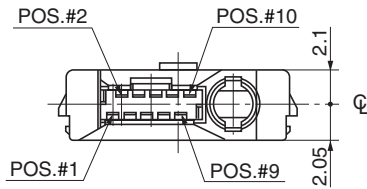


● Configuration of product Part No.

**PXF-A 10 FSP+**

①      ②      ③

- ① Series name
- ② No. of contacts: 10
- ③ Type of contact: Soldering type, female



● Components

①	Insulator
②	Contacts
③	Bracket

Note: This plug is used with housing: PXF-A10SP.

For use with housing: PXF-A10SP

**Plug connector for cellular phone  
(Case components)  
PXF-A10SP**

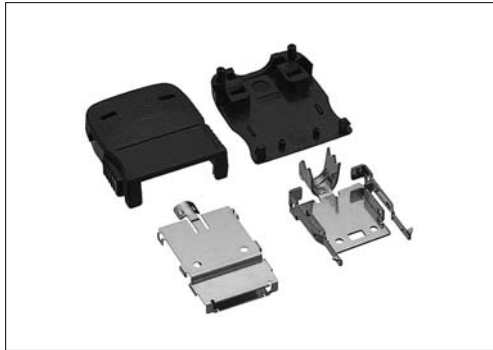
**For mobile equipment**

**For cable**

**Case**

**RoHS**

**EIAJ RC-5238 IMT-2000 type A**

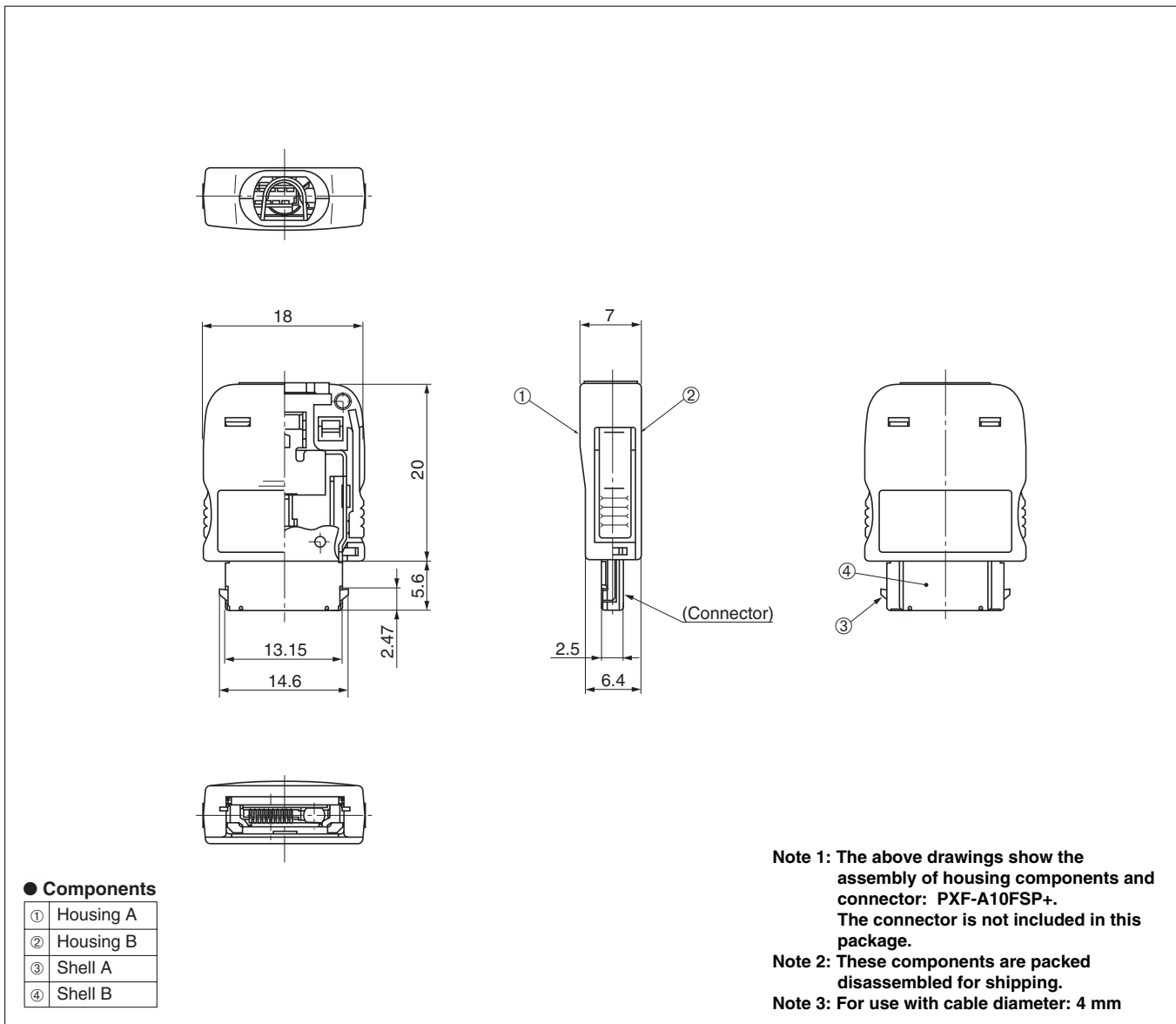


● Configuration of product Part No.

**PXF-A 10 SP**

①      ②      ③

- ① Series name
- ② No. of contacts: 10
- ③ Type of contact: Vertical type



For use with connector: PXF-A10FSP+