



SD series

Connectors for SD cards

Outline

The SD series are socket connectors for small memory cards, which support small cellular phones meeting SD Card Association (SDA) standard.

Features

- Meets SDA standard.
- Allows live card-pad connections for third and fourth contacts.
- Provides lock or detach detection mechanism for write protect switch of SD card.
- Provides card insertion detection mechanism.
- Provides a positioning boss and a hold-down structure to reinforce strength.
- SMT mounting type.

Principal Applications

Various small-sized mobile equipment such as PDA, cellular phone, mobile audio, digital cameras, digital video cameras.

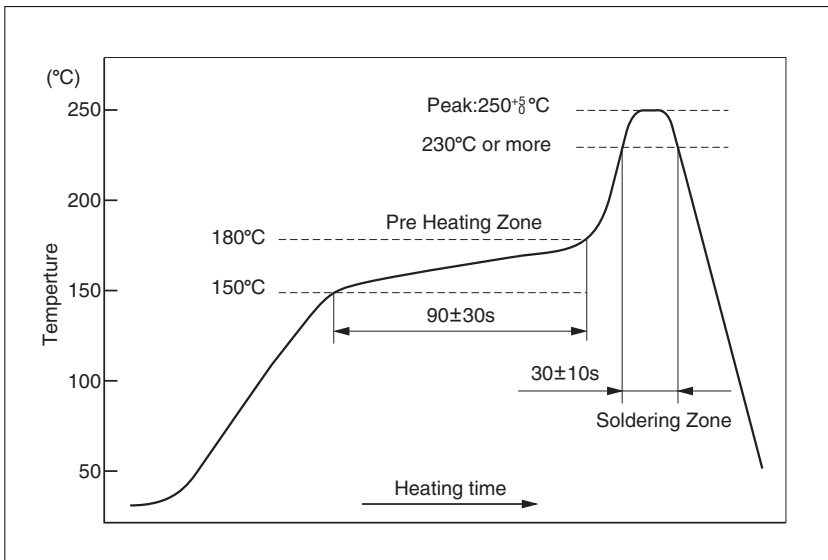
Electrical Characteristics

Rated current	0.5 A
Insulation resistance	1000 megohms MIN. at 500V DC
Dielectric withstanding voltage	500V AC (r.m.s.) for one minute
Contact resistance	100 milliohms MAX.
Temperature range	-25 to +85 °C
Durability	10000 cycles of insertion and extraction

Document Disclaimer

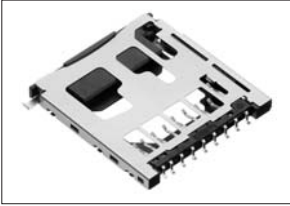
- When placing orders with us, minimum order quantities are set for every product.
- Be sure to contact us before starting preliminary design of PCBs using our connectors.
- The specifications and information shown in the catalog are subject to change without notice.

Reflow temperature profile (for reference purposes)



The reflow temperature profile shown in this drawing is for reference purposes. This profile depends on requirements such as reflow equipment, soldering paste, and PCB size. Thus, this profile may not meet with your specific situation. Please evaluate your PCB-mounting soldering and set your own reflow temperature profile.

Product List



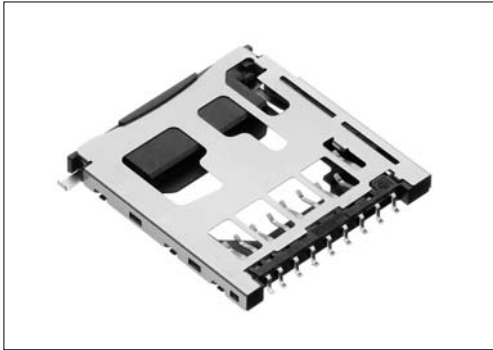
Slot connector for SD card
(Push & Push type)
SD-DR9LFYGA1+

G-34
SD series...4

Slot connector for SD card (Push & Push type)
SD-DR9LFYGA1+

- For SD card
- For PCB
- Right-angle SMT
- SDA standard

RoHS



● Configuration of product Part No.

SD-DR 9 LFY G A1+

① ② ③ ④

- ① Series name
- ② No. of contacts: 9
- ③ Type of contact
LFY: Right-angle SMT type, female
- ④ Contact plating
G: Gold plate

Recommended PCB layout

● Components

①	Signal contacts
②	Insulator A
③	Shell
④	Coiled spring
⑤	Pin
⑥	Insulator B
⑦	W/P contact
⑧	Card detect contact A
⑨	Card detect contact B
⑩	Cap

Note 1: DATE CODE

6 - Last one digit of year
06 - Month
14 - Day

● Table 1

Contact-length	Contact No.
L1	3.4 1
L2	3.9 2, 5, 6, 7, 8
L3	4.4 3, 4
L4	6.2 9

● Table 2

Card wearing state	Write protect switch				Card detect switch	
	Write unable	Write enable	Write unable	Write enable	MMC	SD
Card name	MMC	SD	MMC	SD	MMC	SD
Without card	—	Open	Open	Open	Open	Open
Card inserted	—	Open	Closes	Closes	Closes	Closes
Circuit Diagram No.	⑦-⑧				⑧-⑨	

● Z-Z' cross section

● Table 2

- ⑦: Write protect switch contact
- ⑧: Card detect switch contact A
- ⑨: Card detect switch contact B

Circuit diagram for switch